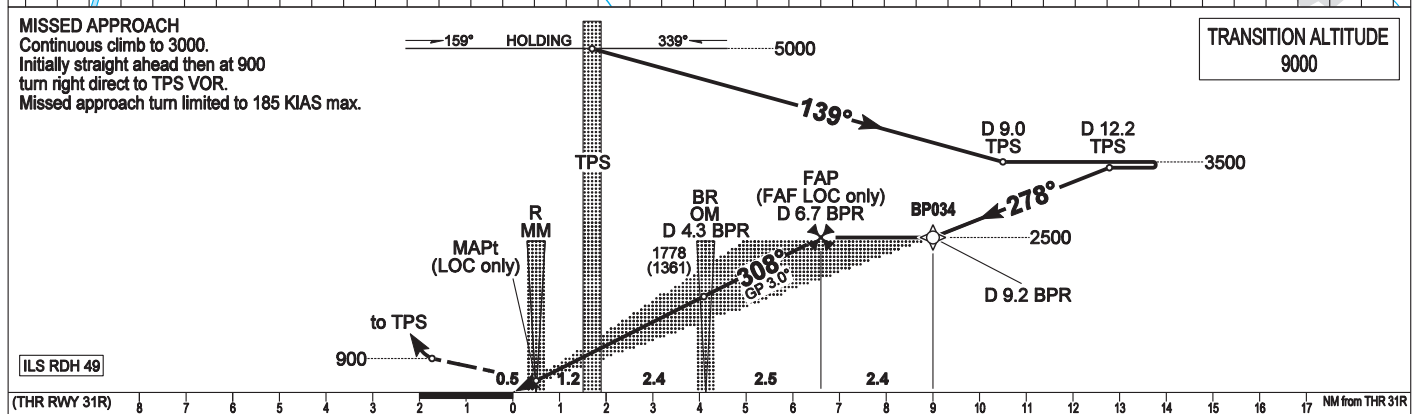
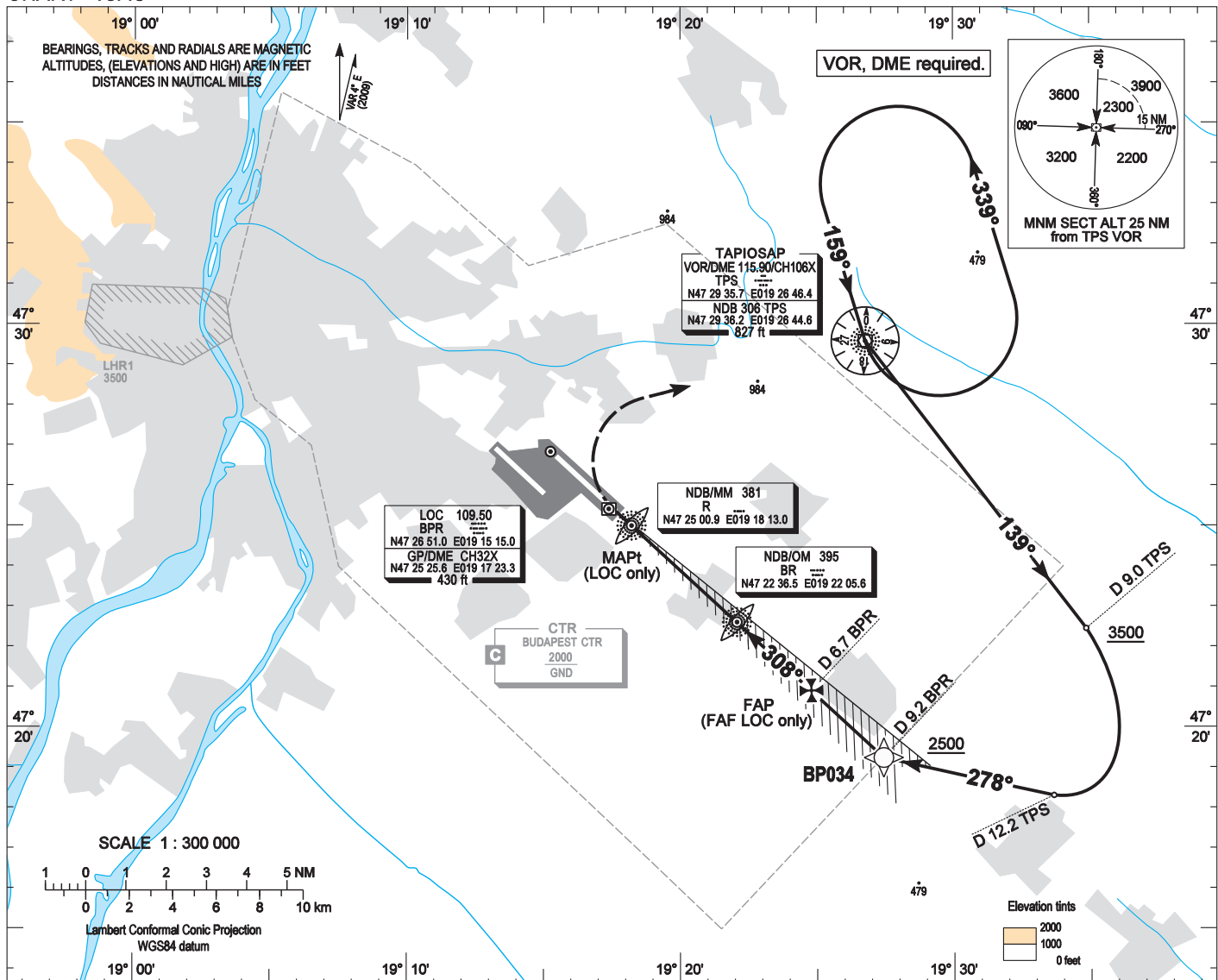


AIP HUNGARY

INSTRUMENT APPROACH CHART - ICAO
AERODROME ELEV 496
HEIGHTS RELATED TO THR RWY 31R - ELEV 416

BUDAPEST APPROACH 129.700
122.975
119.500
ATIS 132.375 (117.300)
BUDAPEST TOWER 118.100
BUDAPEST GROUND 121.900

BUDAPEST/LISZT FERENC
ILS or LOC RWY 31R
(ACFT CAT A, B, C, D)



OCA (OCH)		A	B	C	D	GROUND SPEED						
STRAIGHT-IN APPROACH	Cat. I.	Press. ALT	580 (165)	590 (175)	600 (185)	610 (195)	kt					
	Cat. II.	Rdo. ALT	(75)	(92)	(105)	(118)	MIN:sec					
	Cat. II.	Rdo. ALT	(53)	(65)	(82)	(95)	FPM					
	LOC only		800 (380)									
CIRCLING APPROACH	ft AMSL	950	1100	1280	1460	DIST FM DME						
	VIS. m	1900	2800	3700	4600	ft						
						2.0	3.0	4.0	5.0	6.0		
						1050 (640)	1370 (960)	1690 (1270)	2010 (1590)	2330 (1910)		

AD 2 LHBP INSTRUMENT APPROACH CHART ILS OR LOC RWY 31R

ILS approach from TPS:

Initial level: 5000.

Depart TPS VOR on R 139 and descend to 3500.

At D 9.0 TPS DME fix turn right heading 278° and descend to 2500 to intercept and follow ILS.

Holding procedure:

Holding fix: TPS VOR.

Left hand holding pattern.

Maximum speed: 230 KIAS

Inbound track: 159°

Outbound track: 339°

Rate of turn: 3°/sec. or 25° bank angle
(whichever requires lesser bank)

Outbound timing: 1 min.

Minimum holding altitude: 5000 (ATC)

3000 for Missed approach (ATC)

Final approach descent (LOC only): 2.90°