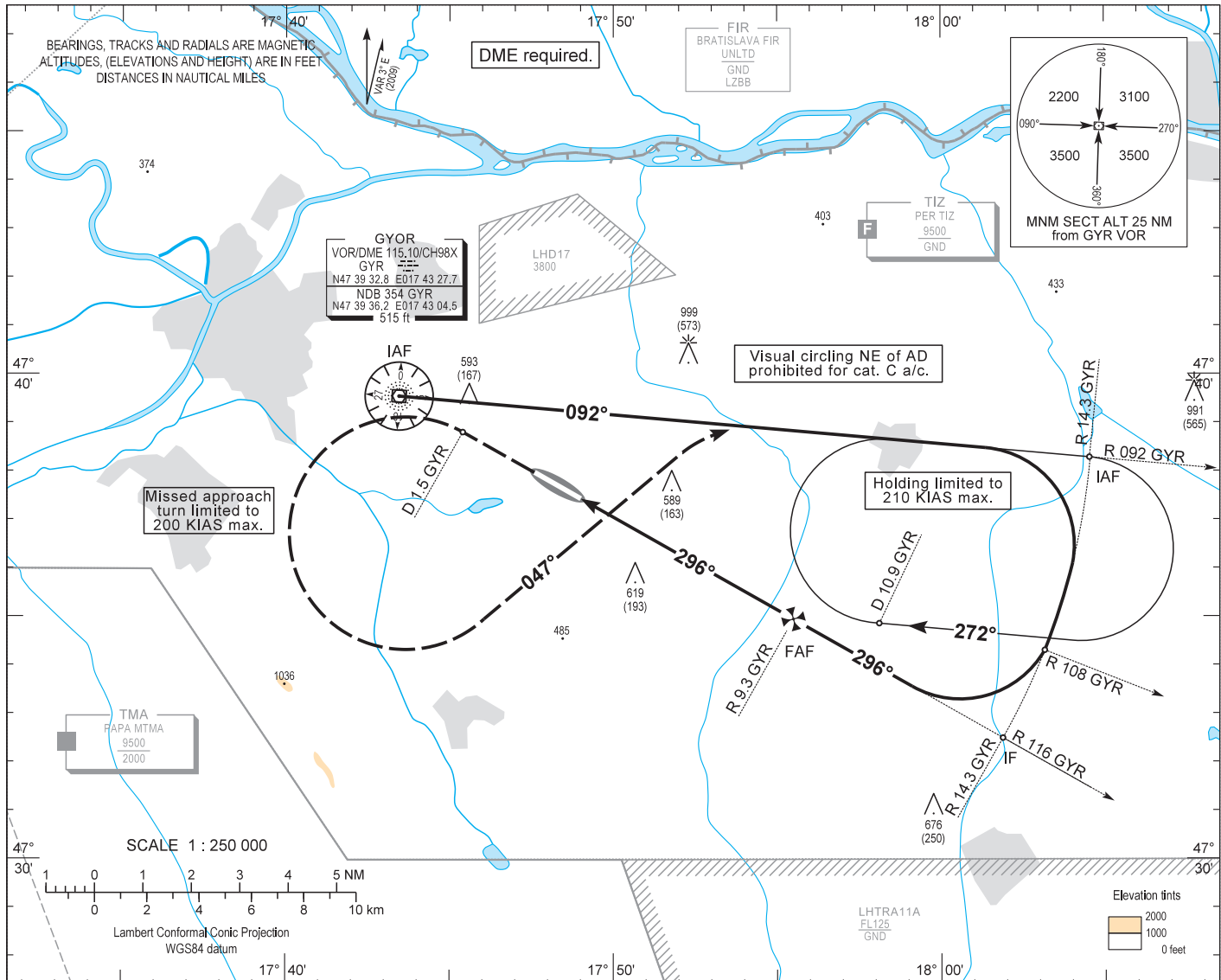


AIP HUNGARY

INSTRUMENT APPROACH CHART - ICAO
AERODROME ELEV 422
HEIGHTS RELATED TO THR RWY 30 - ELEV 426

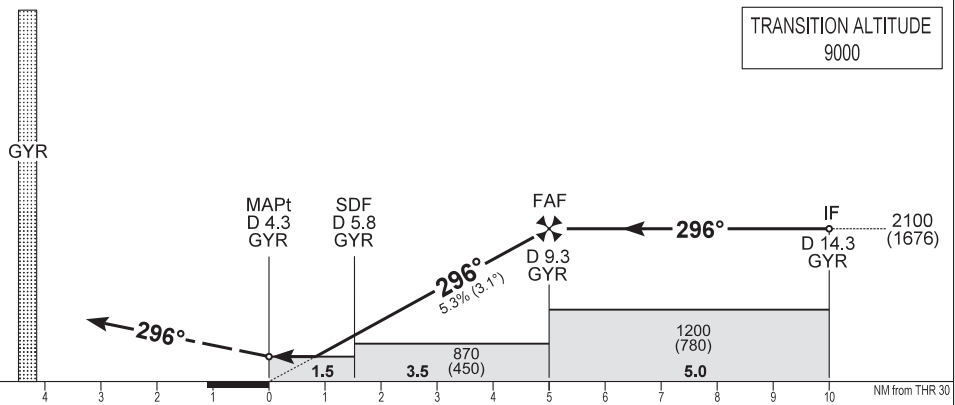
PÉR INFO 129.900
BUDAPEST INFO (WEST) 125.500

GYŐR/PÉR
VOR RWY 30
(ACFT CAT A, B, C)



MISSED APPROACH
Continuous climb to 3500.
Straight ahead, then at D 1.5 GYR turn left (200 KIAS max.) to track 047° to intercept R 092 GYR outbound and hold.

TRANSITION ALTITUDE
9000



(THR RWY 30)		10	9	8	7	6	5	4	3	2	1	0	1	2	3	4	5	6	7	8	9	10	NM from THR 30			
OCA (H)		A		B		C		D		CDFA with GYR DME												NM	9.0	8.0	7.0	6.0
STRAIGHT-IN APPROACH		VOR		790 (370)												ALT		ft	2010	1680	1360	1030				
CIRCLING APPROACH		ft AMSL		890 (470)	930 (510)	1140 (720) SW of AD only		Not Authorized		(HGT)		ft	(1580)	(1260)	(940)	(610)	Timing not authorized to define the MAPt.									
		VIS. m		1900	2800	3700				GROUND SPEED		kt	70	100	130	160										
										FAF - MAPt 5.0 NM		MIN:sec		4:17	3:00	2:18	1:53									
										VSP		ft/min		380	540	710	870									

AD 2 LHPR INSTRUMENT APPROACH CHART VOR RWY 30

FIX	LATITUDE	LONGITUDE	FIX FORMATION (True BRGs)
IAF	N47 39 32.8	E017 43 27.7	GYR VOR
IAF	N47 38 17.1	E018 04 32.0	R 95.00 GYR VOR / D 14.23 GYR DME
IF	N47 32 30.2	E018 01 51.4	R 299.46 GYR VOR / D 14.25 GYR DME
FAF	N47 34 58.2	E017 55 26.1	R 299.46 GYR VOR / D 9.51 GYR DME
SDF	N47 36 41.9	E017 50 55.8	R 299.46 GYR VOR / D 5.80 GYR DME
MAPt	N47 37 25.9	E017 49 00.0	R 299.46 GYR VOR / D 4.30 GYR DME
MA TP	N47 38 48.4	E017 45 23.7	R 299.46 GYR VOR / D 1.5 GYR DME

Final approach descent: 3.06°

Approach holding procedure:

Holding fix: GYR VOR R 092 / D 14.3.

Maximum speed: 210 KIAS
 Inbound track: 092°
 Outbound track: 272°
 Turns: Right
 Outbound timing: 1 min.
 Minimum holding altitude: 4500 (3500 for Missed Approach)
 MOCA: 2000
 Entry: Sector 1 (parallel) and Sector 2 (offset) entries prohibited